

1000A SPLIT CORE RECTANGULAR SLIDE-OUT CURRENT TRANSFORMER



DENT's Split Core Rectangular Slide-Out Current Transformers are designed for easy installation over existing high-current loads without requiring a line or load disconnect. These CTs are ideal for a variety of applications including building automation, tenant submetering, performance verification, energy management, and new technology assessment.



KEY SPECIFICATIONS

Current Rating	1000A
Current Range	20-1300A
Window Size	2.0" (5.1cm)
Output	333.3 mV at rated current
Ratio Error	<1% at rated current (typical)
Phase Error	<2° at rated current (typical)

ELECTRICAL

Wire Polarity	White = Hi, positive (+) Black = Low, negative (-)
Frequency Range	50/60 Hz

MECHANICAL

Case Material	White Nylon, UL94 V-0
Leads	3 M (9.8'), twisted pair, 22 AWG
Operating Temperature	-40° to 55°C (-40° to 131°F)

SAFETY

Working Voltage	600 VAC, Category III 250 VAC, Category IV
Dielectric Strength	5400 VAC around case 600V rated leads
Certification	UL 2808 CAN/UL 2808 CAN/CSA STD C22.2 No. 61010-1-12

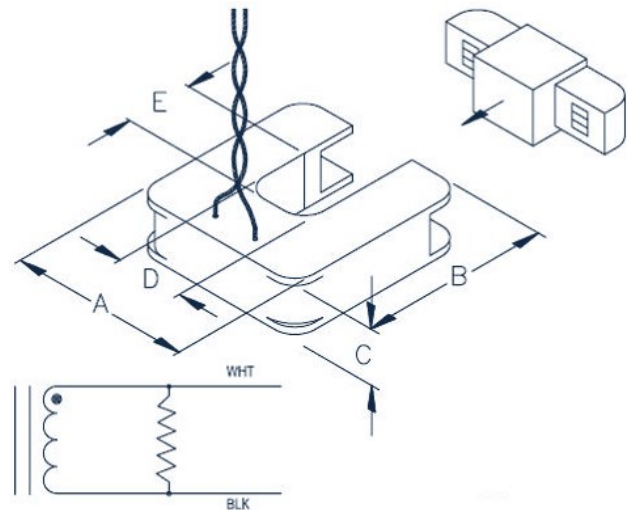


CONTACT US

DENT Instruments, Inc.
Energy & Power Measurement Solutions

925 SW EMKAY DRIVE
BEND, OREGON 97702 USA
541.388.4774 | 800.388.0770
WWW.DENTINSTRUMENTS.COM

OUTLINE DRAWING



DENT P/N	DIMENSIONS				
	A	B	C	D	E
CT-SCL-1000	12.1 cm (4.8")	12.7 cm (5.0")	3.05 cm (1.2")	5.1 cm (2.0")	5.1 cm (2.0")

PART NUMBERS

1000A Split Core Rectangular Slide-Out CT CT-SCL-1000-U

All specifications contained in this document are subject to change without notice.
© DENT INSTRUMENTS, INC.
rev06132024