

# DENTCloud

*Your Data, Anywhere, Subscription-Free*

DENTCloud offers unparalleled accessibility to your energy data anywhere in the world. This intuitive platform provides real-time visibility into all your power consumption data points and the flexibility to create dynamic plots and dashboards that meet your unique monitoring needs.

## API Access

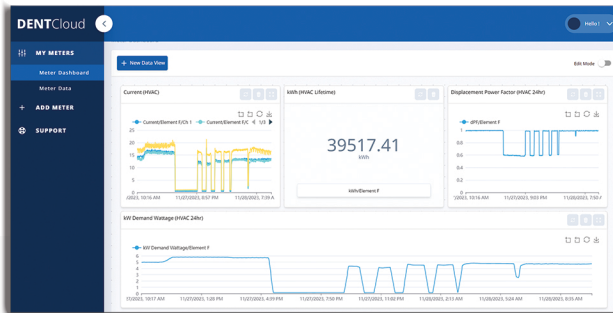
DENTCloud is now accessible through a private API, allowing you to integrate your meter's data directly with any endpoint. Developers can self-manage with easy-to-use API key creation and management tools.

## No Subscription!!

DENTCloud operates on a non-subscription, open-standard basis, ensuring you have full access to your data without recurring fees. Enjoy the freedom to choose your own solutions without being locked into a specific product family.

## User-Friendly Interface

DENTCloud lets you visualize data directly through customizable widgets and dashboards. Create real-time views of data points, graphs, and trends effortlessly to gain the insights that matter most to you.



## APPLICATIONS:

- Tenant Submetering and Billing
- Compliance and Certifications
- Real-time Monitoring of Energy and Carbon Goals
- Measurement & Verification Projects



## WHAT'S NEW IN v1.2:

- Enhanced filtering and sorting
- Custom naming and location of meters
- Local time data handling
- Flexible widgets
- Improved layouts for tabular data views
- Real-time synchronization

## DENTCLOUD FEATURES:

- Dynamic and scalable database
- No data storage limits
- Real-time access (*voltage, current, power, and more*)
- Highly accurate, revenue-grade data
- Customizable data visualization
- Accessible from any web browser
- Manage multiple meters in a single account
- Share meter data between multiple accounts