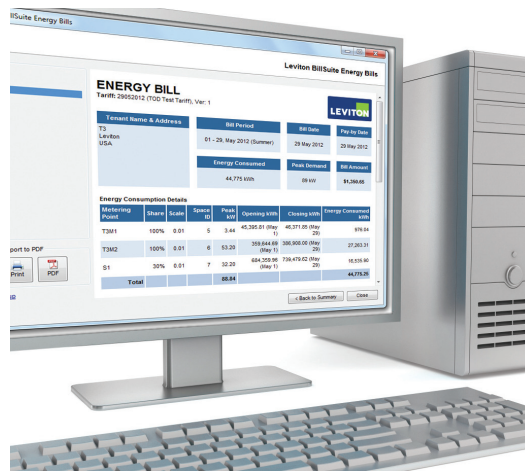


BillSuite

Energy Monitoring & Tenant Billing Solution



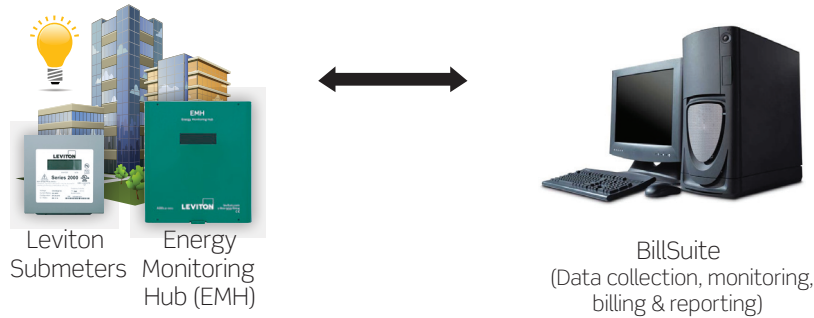
Powerful. Flexible. Intuitive.

Measure. Monitor. Manage. Bill.

BillSuite is a PC based software program that provides individual tenant billing capabilities to ensure accurate and complete recovery of tenant energy costs. BillSuite provides graphical profiling of interval data, generates charts and graphs of consumption and demand data. This software solution automates the tenant billing process by eliminating manual meter readings for simplified, more accurate measurement and verification.

How Leviton BillSuite Works

Simple, Effective, Turn Key Solution to Monitor & Bill Energy Usage



- Leviton submetering systems record real-time kWh and kW consumption data
- BillSuite software is a customer owned, PC based licensed software program, without recurring fees for continued use
- BillSuite collects data, generates individual tenant bills using customizable utility rates, and provides graphing and trending capabilities
- Other submeters such as gas, water, BTU, etc. can be added to tenant bill

Leviton BillSuite is Packed with Features

KEY BENEFITS

- Generate monthly electricity bills for each tenant
- Improve cash flow and increase net operating income
- Eliminate uncertainty of variable utility costs
- Delegate energy usage accountability to tenants
- Improve tenant satisfaction and retention
- Increase property value
- Enables facility manager to identify and fix energy waste and reduce overall cost

KEY FEATURES

- Monitor energy consumption of each tenant or whole building on a 24x7 basis
- Meters can be in a basement, wire closet or individual unit
- Billing of each tenant from the convenience of your PC
- Monthly and periodic billing reports for any or all meters
- Energy profile to identify peak demand and energy wastage

Real-time Energy Data Monitoring

BillSuite generates individual bills for user definable dates by using data automatically downloaded from the Leviton metering system.

The screenshot shows the Leviton BillSuite interface with the following data:

Data for 'Leviton A8911 - Input #22' [2:30:00 AM - 29 May 12].	
Cumulative Energy	177,293.5 kWh
Power Demand	12.8 kW
Average Line to Line Voltage (VLL)	N/A
Average Line to Neutral Voltage (VLN)	N/A
Average Current	N/A
Power Factor	N/A

Navigation buttons at the bottom include: Latest Data, Energy Bills, Graphs, Reports, Tools.

Powerful & Flexible Tenant Billing

Very powerful and flexible billing system—intuitive and fully customizable with custom billing tariffs.

The first screenshot shows the 'Leviton BillSuite Energy Bills' window with a table of tenants:

Select-All	Tenant	Tenant Status	Bill Period	Energy (kWh)	Demand (kW)	TOD Demand (kW)	Bill Amount
<input type="checkbox"/>	T1	Active	01 May 2012 - ...	0.00	0.00	0.00	\$ 100.00
<input type="checkbox"/>	T2	Active	01 May 2012 - ...	14,699.46	64.72	63.25	\$ 512.48
<input type="checkbox"/>	T3	Active	01 May 2012 - ...	44,775.25	88.84	87.84	\$ 1,350.65

The second screenshot shows a detailed 'ENERGY BILL' for tenant T3:

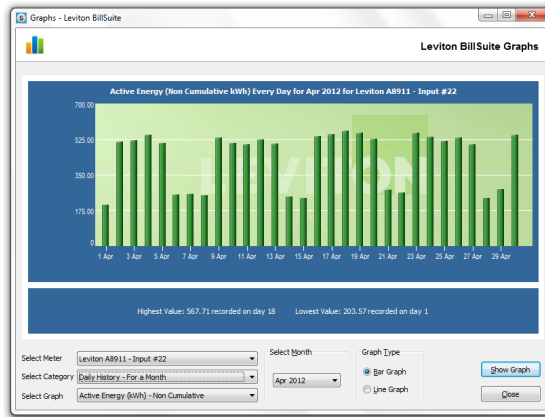
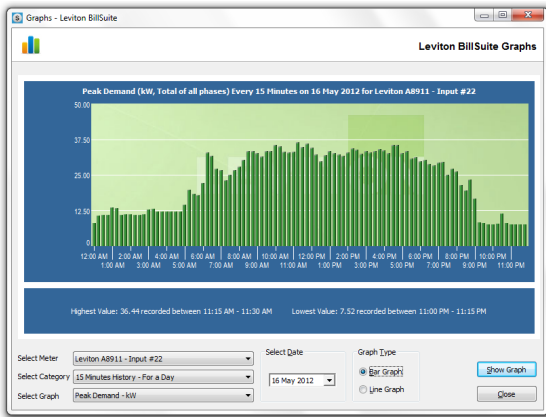
Tenant Name & Address	Bill Period	Bill Date	Pay-by Date
T3 Leviton USA	01 - 29, May 2012 (Summer)	29 May 2012	29 May 2012
Energy Consumed	Peak Demand	Bill Amount	
44,775 kWh	89 kW	\$1,350.65	

Energy Consumption Details:

Metering Point	Share	Scale	Space ID	Peak kW	Opening kWh	Closing kWh	Energy Consumed kWh
T3M1	100%	0.01	5	3.44	45,385.81 (May 1)	46,371.85 (May 29)	976.04
T3M2	100%	0.01	6	53.20	359,644.69 (May 1)	386,908.00 (May 29)	27,263.31
S1	30%	0.01	7	32.20	684,359.96 (May 1)	739,479.62 (May 29)	16,535.90
Total				88.84			44,775.25

Energy Usage Analysis for Energy Management

Energy Management is the key to smart energy use and cost control. It consists of collecting, storing, analysing and reporting data to give end users the information they need to make smart, effective energy decisions.



Leviton BillSuite Reports
Energy Consumption and Peak Demand Report for All Meters
 Month: April 2012

Location Name and Address
 Leviton
 USA

Meter Name	Energy (kWh)	Peak Demand	Peak Demand Time
Leviton A8911 - Input #20	730.6	21.2	26/Apr/2012 03:30:00 PM
Leviton A8911 - Input #21	5,875.8	28.0	16/Apr/2012 03:00:00 PM
Leviton A8911 - Input #22	13,088.7	39.4	23/Apr/2012 11:00:00 AM
Leviton A8911 - Input #23	0.0	0.0	1/Apr/2012 12:00:00 AM
Leviton A8911 - Input 10	5,459.0	15.1	30/Apr/2012 10:15:00 AM
Leviton A8911 - Input 11	2,372.5	10.7	19/Apr/2012 10:30:00 AM
Leviton A8911 - Input 12	2,222.5	19.0	2/Apr/2012 09:00:00 AM
Leviton A8911 - Input 8	9,107.0	28.5	10/Apr/2012 01:15:00 PM
Leviton A8911 - Input 9	8,084.2	14.5	24/Apr/2012 10:15:00 AM
51	57,823.2	107.7	24/Apr/2012 10:15:00 AM
T2M1	4,933.7	17.7	3/Apr/2012 02:15:00 PM
T2M2	8,720.7	18.4	20/Apr/2012 09:00:00 PM
T2M1	3,679.8	10.6	10/Apr/2012 11:30:00 AM
T2M2	7,418.3	19.3	23/Apr/2012 11:30:00 AM
T3M1	1,133.2	3.4	3/Apr/2012 09:00:00 AM
T3M2	30,138.4	49.8	27/Apr/2012 07:15:00 AM
Total	243,849.8		

31 records found

ORDERING INFORMATION

CAT. NO.	DESCRIPTION
LBSSW-01L	BillSuite Software 1 - 50 Meters
LBSSW-02L	BillSuite Software 51 - 100 Meters
LBSSW-03L	BillSuite Software 101 - 200 Meters
LBSSW-04L	BillSuite Software 201 - 300 Meters
LBSSW-05L	BillSuite Software 301 - 400 Meters
LBSSW-06L	BillSuite Software 401 - 550 Meters
LBSSW-07L	BillSuite Software 551 - 750 Meters
LBSSW-08L	BillSuite Software 751 - 1000 Meters



Leviton Manufacturing Co., Inc. Global Headquarters

201 N. Service Rd. Melville, NY 11747-3138 • Tech Line: 1-800-824-3005 • FAX: 1-800-832-9538

Leviton Manufacturing Co., Inc. Lighting & Energy Solutions

20497 SW Teton Avenue, Tualatin, OR 97062 • Tel: 1-800-736-6682 • FAX: 503-404-5594 • Tech Line: (6:00AM-4:00PM P.S.T. Mon-Fri): 1-800-959-6004

Leviton Manufacturing of Canada, Ltd.

165 Hymus Boulevard, Pointe Claire, Quebec H9R 1E9 • Telephone: 1-800-469-7890 • FAX: 1-800-563-1853

Leviton S. de R.L. de C.V.

Lago Tana 43, Mexico DF, Mexico CP 11290 • Tel. (+52) 55-5082-1040 • www.leviton.com.mx

Visit our Website at www.leviton.com/les

© 2012 Leviton Manufacturing Co., Inc. All rights reserved. Subject to change without notice.